

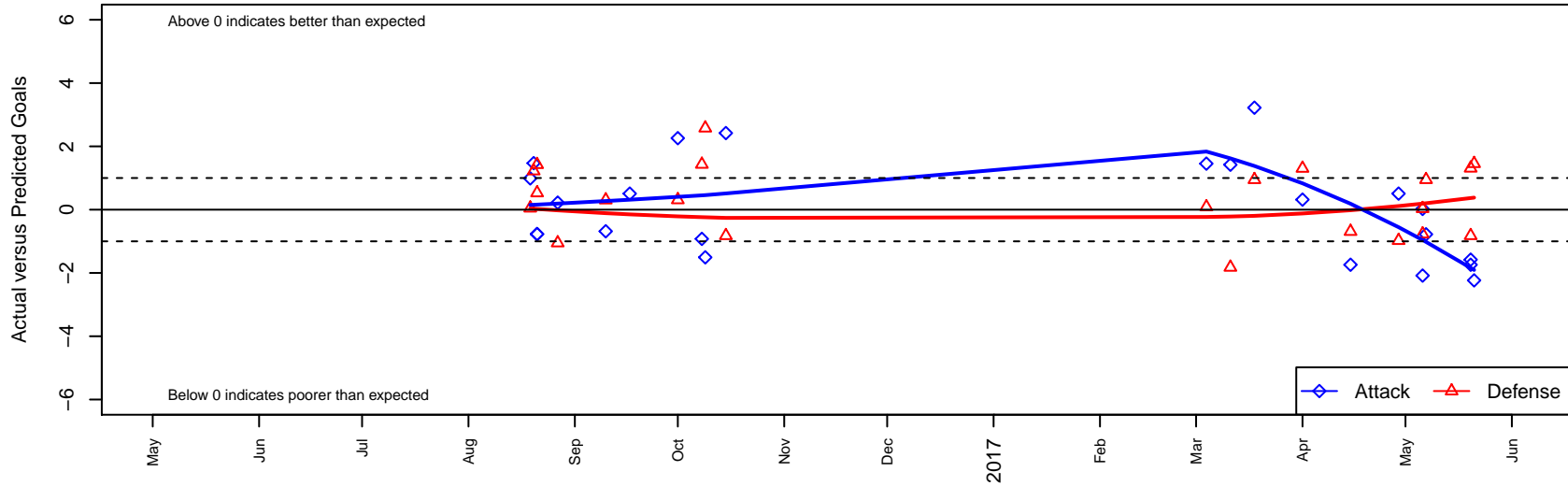
Boise Nationals Timbers Blue B05

Boise Nationals
 Boise, ID
 B05 total strength=847
 attack=1.41 defense=0.98
 fall league = Idaho D3 U12 North U12
 spr league = Spr Idaho D3 U12 North

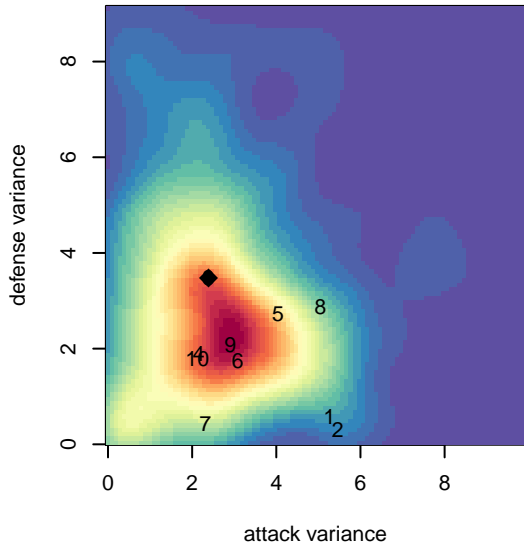
alt names used:
 BOISE NATIONALS TIMBERS U12 2005 BLUE
 BOISE NATIONALS TIMBERSBOISE NATION/
 BOISE NATIONALS TIMBERS U12 2005 BLUE
 BOISE NATIONALS TIMBERS BNT BLUE (ID)
 BOISE NATIONALS TIMBERS 2005 BLUE (ID)

Venues played:
 2016 NWCL 05
 2016 Idaho D3 U12 North U12
 2016 Spr Idaho D3 U12 North
 2016 Canyon Rim Classic U12 B American U12
 2016 ID Directors Cup U12B Gold U12

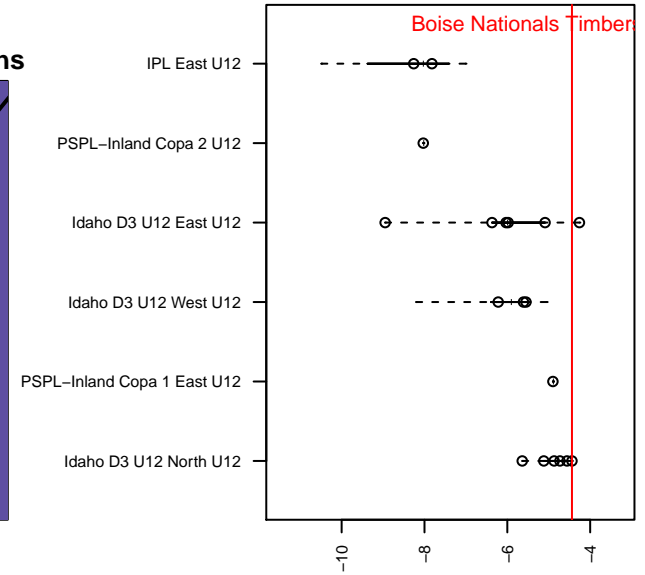
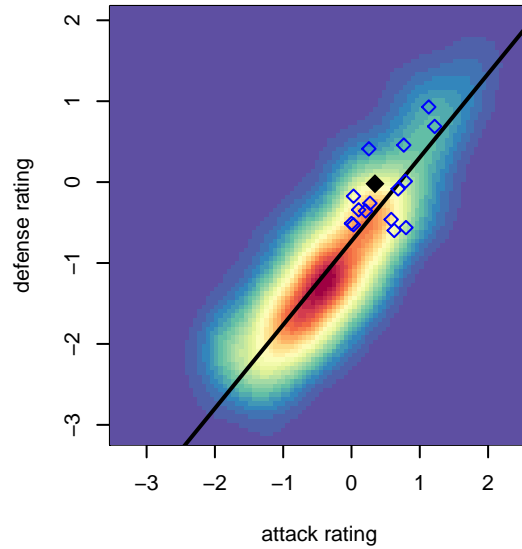
Boise Nationals Timbers Blue B05
 Dots are actual minus expected GF (blue circles) and GA (red triangles).
 Blue line is smoothed change in attack strength. Red is smoothed change in defense strength.



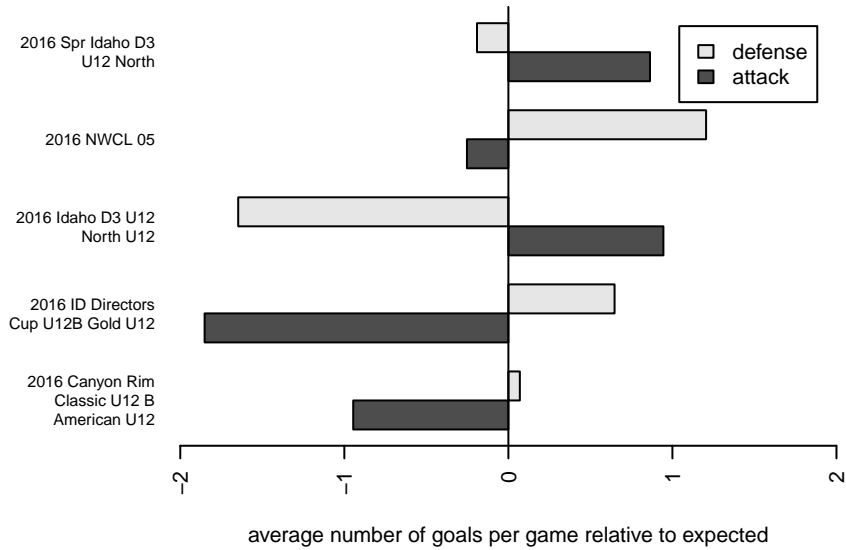
**attack and defense variance (black dot)
relative to other teams
and top 10 in region**



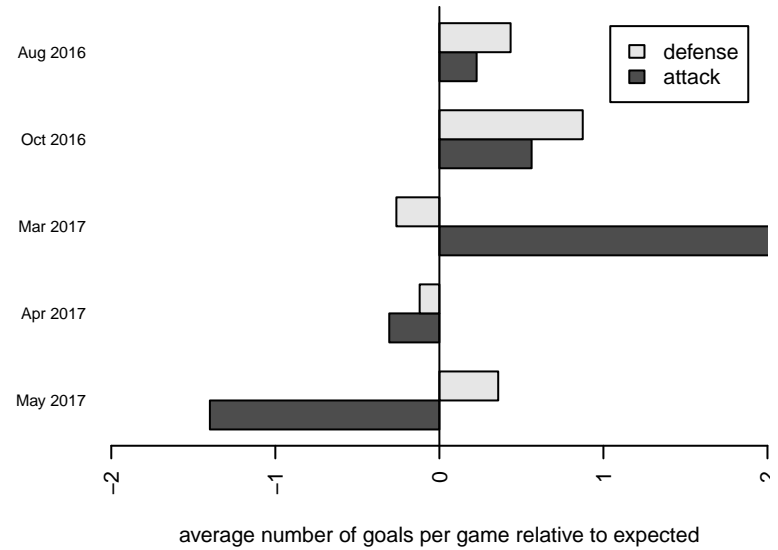
**attack and defense rating
relative to others at age
and all opponents in last 13 months**



Performance relative to 13 month average



Performance relative to 13 month average



date	home		away		venue	pred.home	pred.awa
2017-05-21	Sting SC Timbers Red B05	0	Boise Nationals Timbers Blue B05	0	2016 ID Directors Cup U12B Gold U12	1.45	2.23
2017-05-20	Boise Nationals Timbers Blue B05	1	Idaho Rush Blue B05	0	2016 ID Directors Cup U12B Gold U12	2.74	1.31
2017-05-20	Boise Nationals Timbers Blue B05	1	Boise Nationals Timbers White B05	3	2016 ID Directors Cup U12B Gold U12	2.58	2.18
2017-05-07	Idaho Rush White B05	0	Boise Nationals Timbers Blue B05	2	2016 Canyon Rim Classic U12 B American U	0.95	2.78
2017-05-06	Boise Nationals Timbers Blue B05	1	Rock Springs Avengers B05	2	2016 Canyon Rim Classic U12 B American U	0.98	1.23
2017-05-06	Boise Nationals Timbers Blue B05	0	Sun Valley Blue B05	1	2016 Canyon Rim Classic U12 B American U	2.08	1.03
2017-04-29	FC Nova Gold JP B05	3	Boise Nationals Timbers Blue B05	3	2016 Spr Idaho D3 U12 North	2.02	2.49
2017-04-15	Idaho Rush Blue B05	2	Boise Nationals Timbers Blue B05	1	2016 Spr Idaho D3 U12 North	1.31	2.74
2017-04-01	Boise Nationals Timbers Blue B05	3	FC Nova Gold TB B05	1	2016 Spr Idaho D3 U12 North	2.68	2.30
2017-03-18	Idaho Rush White B05	0	Boise Nationals Timbers Blue B05	6	2016 Spr Idaho D3 U12 North	0.95	2.78
2017-03-11	Boise Nationals Timbers Blue B05	4	Boise Nationals Timbers White B05	4	2016 Spr Idaho D3 U12 North	2.58	2.18
2017-03-04	Canyon Optimist Inferno B05	1	Boise Nationals Timbers Blue B05	4	2016 Spr Idaho D3 U12 North	1.09	2.55
2016-10-15	Boise Nationals Timbers Blue B05	5	Boise Nationals Timbers White B05	3	2016 Idaho D3 U12 North U12	2.58	2.18
2016-10-09	LASC IFC Eagles B05	0	Boise Nationals Timbers Blue B05	0	2016 NWCL 05	2.58	1.51
2016-10-08	Academia de Futebol ADF B05	1	Boise Nationals Timbers Blue B05	0	2016 NWCL 05	2.43	0.92
2016-10-01	Idaho Rush Blue B05	1	Boise Nationals Timbers Blue B05	5	2016 Idaho D3 U12 North U12	1.31	2.74
2016-09-17	FC Nova Gold JP B05	9	Boise Nationals Timbers Blue B05	3	2016 Idaho D3 U12 North U12	2.02	2.49
2016-09-10	Boise Nationals Timbers Blue B05	2	FC Nova Gold TB B05	2	2016 Idaho D3 U12 North U12	2.68	2.30
2016-08-27	Boise Nationals Timbers Blue B05	3	Idaho Rush White B05	2	2016 Idaho D3 U12 North U12	2.78	0.95
2016-08-21	Westside Timbers Copa B05	3	Boise Nationals Timbers Blue B05	0	2016 NWCL 05	3.53	0.78
2016-08-21	FC Portland Navy B05	2	Boise Nationals Timbers Blue B05	0	2016 NWCL 05	3.42	0.77
2016-08-20	ISC Gunners A B05	0	Boise Nationals Timbers Blue B05	4	2016 NWCL 05	1.22	2.53
2016-08-19	Wenatchee FC Black B05	2	Boise Nationals Timbers Blue B05	3	2016 NWCL 05	2.05	2.01